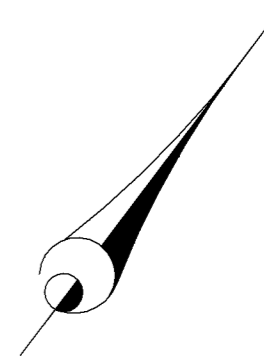
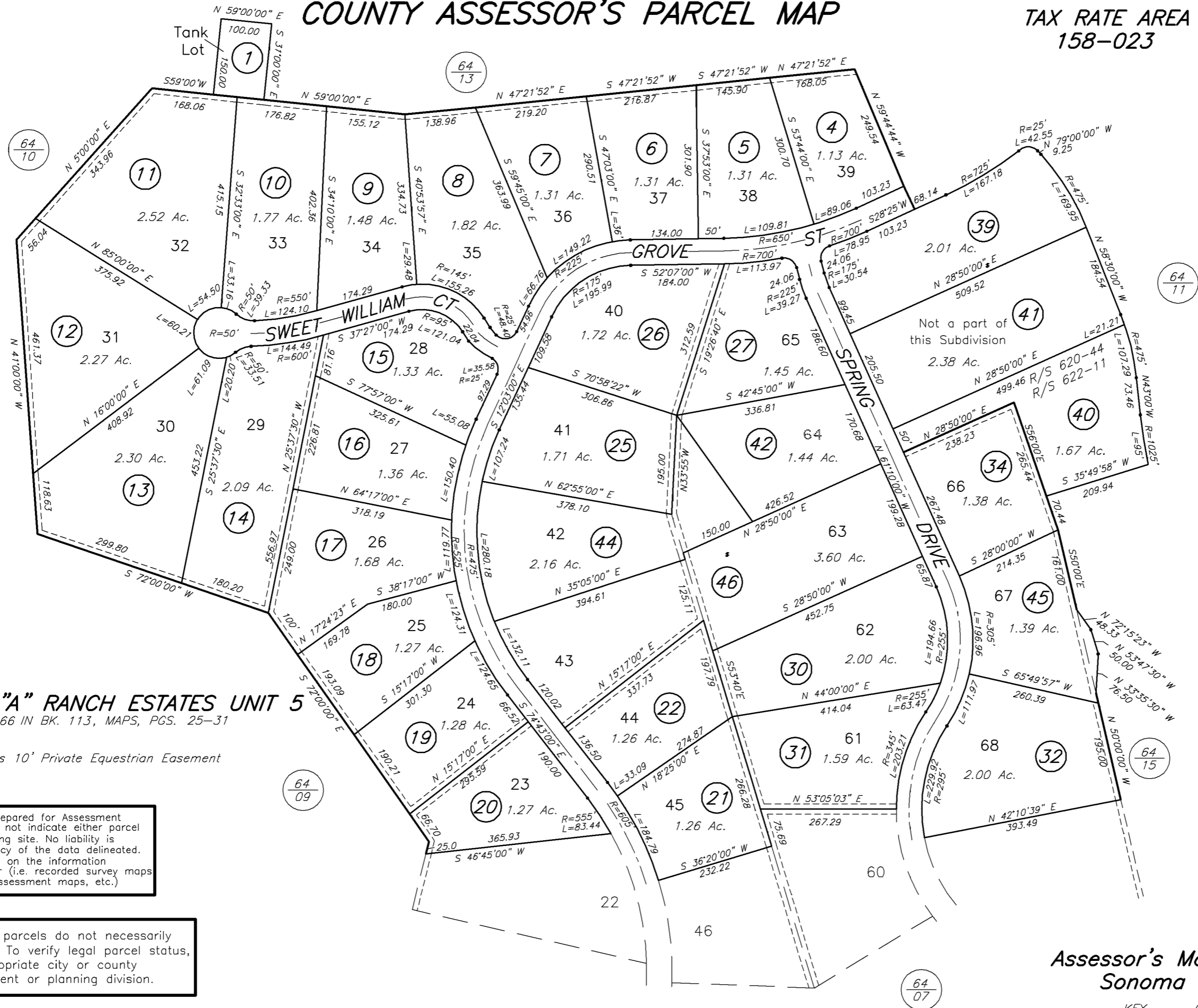


COUNTY ASSESSOR'S PARCEL MAP

TAX RATE AREA
158-023

64-08



SCALE: 1"=200'

Ptn. DIAMOND "A" RANCH ESTATES UNIT 5

REC. 12-29-66 IN BK. 113, MAPS, PGS. 25-31

---- Denotes 10' Private Equestrian Easement

NOTE: This map was prepared for Assessment purposes only and does not indicate either parcel legality or a valid building site. No liability is assumed for the accuracy of the data delineated. The acreages are based on the information supplied to the Assessor (i.e. recorded survey maps, recorded deeds, prior assessment maps, etc.)

NOTE: Assessor's parcels do not necessarily constitute legal lots. To verify legal parcel status, check with the appropriate city or county community development or planning division.

REVISED
03-18-06=46-LSL

Assessor's Map Bk. 064, Pg. 08
Sonoma County, Calif. (ACAD)

KEY 04-23-08=46 KB