

Title Insurance & Trust Company, a Corporation, successor by merger to Sonoma County Land Title Company, Trustee under the Deed of Trust recorded in Book 1823, pg. 581, Official Records of Sonoma County, against the tract of land shown hereon, hereby consent to the preparation and recordation of this map.

By: R.C. Gambini - Vice President

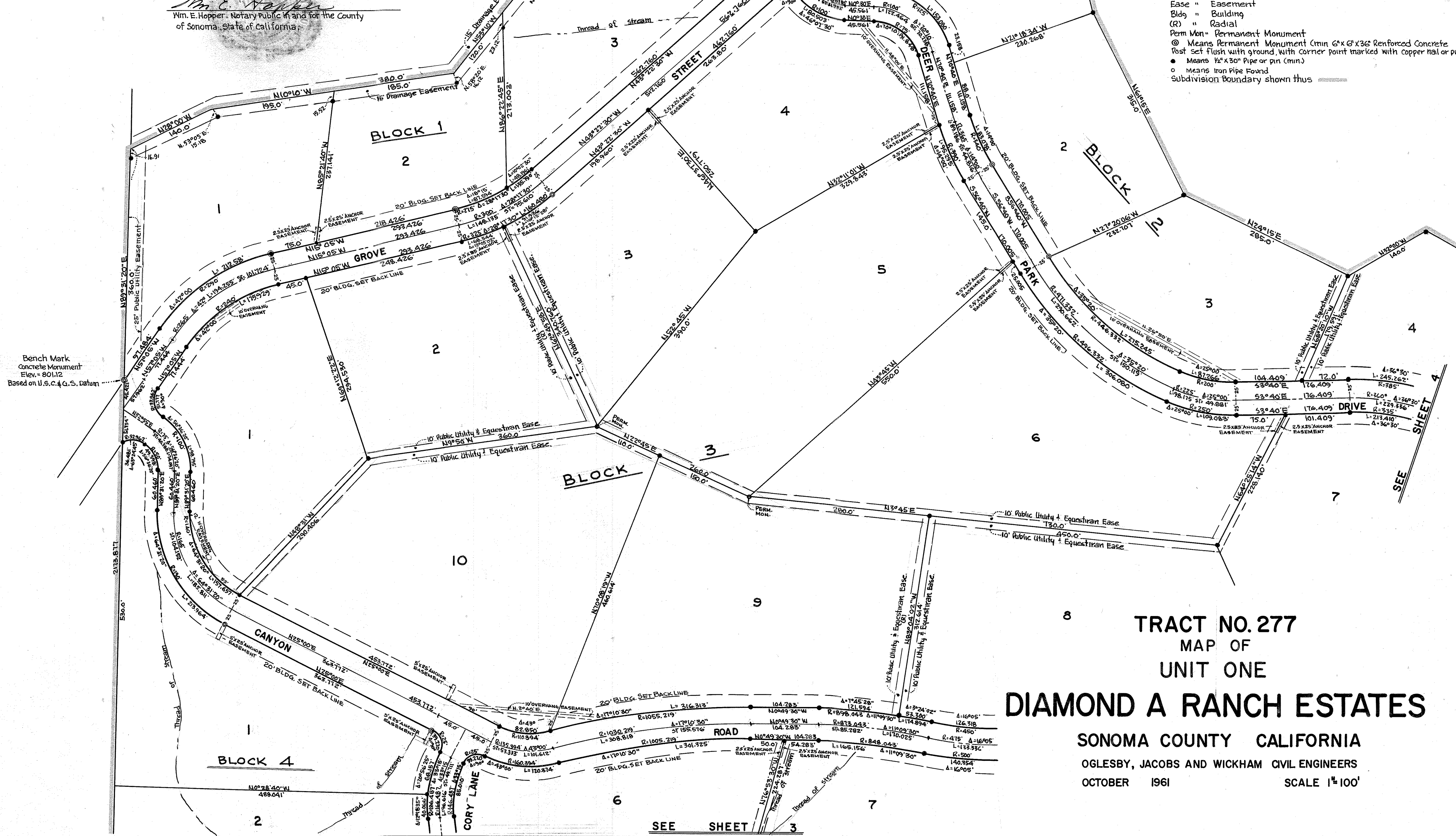
By: H.D. Jones - Assistant Secretary

STATE OF CALIFORNIA
COUNTY OF SONOMA

On this 20th day of February in the year 1962, before me, the undersigned, a Notary Public, personally appeared R.C. GAMBINI, known to me to be the Vice President, and H.D. Jones, known to me to be the Assistant Secretary of Title Insurance and Trust Company, successor by merger to Sonoma County Land Title Company, and known to me to be the persons who executed the within instrument on behalf of said Title Insurance and Trust Company, the corporation that executed and whose name is subscribed to the within instrument on behalf of said corporation as Trustee under the Deed of Trust recorded in Book 1823, pg. 581, Official Records of Sonoma County.

Wm. E. Hopper - Notary Public in and for the County of Sonoma, State of California.

- LEGEND •
- Δ Means Delta
 - R " Radius
 - L " Length
 - P.R.C. " Point of Reverse Curve
 - Ease " Easement
 - Bldg " Building
 - (R) " Radial
 - Perm Mon " Permanent Monument
 - ⊙ Means Permanent Monument (min 6"x6"x36" Reinforced Concrete Post set flush with ground, with corner point marked with copper nail or pin.
 - Means 1/2"x30" Pipe or pin (min.)
 - Means Iron Pipe Found
 - Subdivision Boundary shown thus



TRACT NO. 277
MAP OF
UNIT ONE
DIAMOND A RANCH ESTATES

SONOMA COUNTY CALIFORNIA
OGLESBY, JACOBS AND WICKHAM CIVIL ENGINEERS
OCTOBER 1961
SCALE 1"=100'

MAP CASE 2131

2131